



business  
interiors  
direct

**i29**

PERFORMANCE  
SEATING

**HOOD**  
HOOD SEATING





**HOOD SEATING ARE  
PASSIONATE ABOUT  
YOUR HEALTH  
AND WELL-BEING.  
WE BRING YOU OUR  
UNIQUE ERGONOMIC  
AND INTUITIVE TASK  
SEATING RANGE.**

**i29**  
**PERFORMANCE  
SEATING**



## HOOD PHILOSOPHY

**WE HAD A VISION...**  
**TO CREATE SIMPLE-TO-USE**  
**ERGONOMIC CHAIRS**  
**THAT WOULD FIT EVERYBODY,**  
**EVERYWHERE. RESOURCES ARE**  
**PRECIOUS, SO A SUSTAINABLE,**  
**LONG-LIFE DESIGN WAS**  
**ESSENTIAL WHILST OFFERING**  
**AFFORDABILITY FOR ALL.**  
**AT HOOD, WE DELIVER OUR**  
**RANGE OF UNIQUE CHAIRS**  
**QUICKLY TO OUR RESPECTED**  
**DEALER NETWORK WITH**  
**A PERSONAL SERVICE AND**  
**COMMITMENT TO LONG-TERM**  
**RELATIONSHIPS.**





**We all deserve to have our bodies supported correctly.  
Hood Seating encourages dynamic movement to improve  
our blood flow so we feel great and are focused to work.  
Hood delivers healthy, affordable seating for everyone.**

---

Where once ergonomics was about preventing or mitigating harm, it is now about helping people be more healthy, productive and active.

High-end seating manufacturers recognise the importance of muscle movement and engineer chairs to encourage people to shift position whilst seated. This stimulates movement in the muscles; increases blood flow, relieves pressure points, and helps with concentration.

The mechanisms that enable this movement are no longer the exclusive domain of expensive chairs and can now be found throughout the Hood range. Healthy seating is no longer the luxury for the few but an affordable solution for everyone.

Comfortable employees typically work better; are happier and reduce the sick days an organisation can suffer. Hygiene, too, is improved by using modern materials such as mesh which offers ventilation and is easy to clean.

Our unique patented chairs have been designed so that every component can be removed and replaced to deliver extreme product longevity. Replacing damaged parts is good for our environment too.

You can be confident your Hood chair will always deliver peak performance and outstanding return on investment.



**i29** PERFORMANCE SEATING

**ERGO-REVOLUTION  
WITH ITS PATENTED  
LUMBAR AND PELVIC  
SUPPORT SYSTEM AND  
INTUITIVE CONTROLS,  
USERS OF MANY SIZES AND  
SHAPES GET THE RIGHT  
SUPPORT AND DYNAMIC  
MOVEMENT FROM THE  
MOMENT THEY SIT IN THE  
i29 CHAIR. ALL GUARANTEED  
FOR 10 YEARS REDUCING  
TO 3 YEARS IN 24 HOUR  
ENVIRONMENTS.**



## **At Hood Seating, we are passionate that people maintain healthy posture through proper chair adjustment.**

The i29 boasts one of the most intuitive mechanisms on the market. With three easy-to-use pictorial controls on the right-hand side operating seat height, seat depth and advanced dynamic movement, the mechanism can also be locked at any angle for added versatility. This works like a knee tilt mechanism with the first articulation at the underside of the thighs and the second point under your sitting bones (ischial tuberosities), delivering constant support in active mode and reducing the pressure on the underside of the user's thighs.

The extendable direct tension control adjusts the resistance of the chair to comfortably balance users weighing from 8 to 23.5 stone.

Our fully patented floating lumbar support automatically moves with you when in dynamic mode, giving continuous lumbar support. The chair's split back is designed to deliver independent upper back support as well as ensuring the patented lumbar system protects the lower regions – keeping the user's pelvis rotated.

The back can easily be height adjusted for each user's anthropometric measurements by releasing two buttons on the back of the chair.

The i29 is fitted with an aluminium five-star base as standard. The chair can also be enhanced with optional features. Two different styles of optional headrests are available and may be retro-fitted – the Executive headrest is ideal for 24/7 use and managerial areas, and the Ergonomic headrest provides more adjustment.

The 4D multifunctional arms incorporate three buttons to increase armrest length, width and height which can be locked in position. The angle of the arm pads can also be adjusted to suit. If customers prefer their chair to have no arms the i29's can be removed easily leaving the design uncompromised and safe for users.

Another useful option is a coat hanger which can be attached to the back of the chair keeping jackets and coats wrinkle-free and safely off the floor.



**i29** DESIGN YOUR PERFECT CHAIR

**SIT DOWN | STAND OUT**  
**56 TEXTILE OPTIONS**  
**CUSTOM UPHOLSTERY**  
**AVAILABLE UPON REQUEST**  
**4D MULTIFUNCTIONAL ARMS**  
**2 HEADRESTS**  
**COAT HANGER**  
**CHOICE OF FRAME FINISHES**  
**OPTIONAL INTEGRATED LEGREST**  
**OPTIONAL FOOTSTOOL**





# i29



The i29's dual spring mech delivers infinite tilt-lock positions and its floating lumbar provides superb lower-back support.

## FEATURES

- A** Optional headrests with height and angle adjustment (can be retro-fitted).
- B** Upper back designed for great thoracic support.
- C** Aluminium height-adjustable backrest locking in three positions.
- D** Floating lumbar and pelvic supporting lower back.
- E** Intuitive, pictorial three lever control to activate seat height, seat slide and dynamic movement, allowing users infinite lock positions.
- F** Extendable direct tension control.
- G** Alloy mechanism finishes.
- H** Dual pivot mechanism.
- I** Rounded waterfall seat front.
- J** 4D multifunctional armrests with soft touch pads.
- K** Aluminium five-star base as standard.

## OPTIONS

56 textile options /Custom upholstery options available, including vinyl and leather for seat pads available on request.

White frame.

Coat hanger.

Integrated legrest.

Mesh or foam upholstery option for seat.

Ergonomic (height & angle) or wider executive (height adjustable) headrests.

CERTIFIED 5459

BS 5459-2:2000+A2:2008

Specification for performance requirements and tests for office furniture. Office pedestal seating for use by persons weighing up to 150kg and for use up to 24 hours a day. Single shift setting guaranteed for 10 years reducing to 3 years for 24 hour environments.

## MODELS



**WITHOUT HEADREST**  
Shown with mesh seat  
and 4D armrest



**WITH EXECUTIVE HEADREST**  
Shown with mesh seat  
and 4D armrest



**WITH ERGONOMIC HEADREST**  
Shown with mesh seat  
and 4D armrest



**STEALTH EDITION**  
Shown with fabric seat  
and 4D armrest

## OPTIONS



**EXECUTIVE HEADREST**  
Height and tilt adjustment



**ERGONOMIC HEADREST**  
Height and tilt adjustment



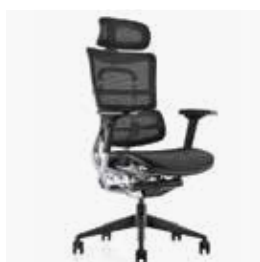
**MESH SEAT**  
In a choice of Hood meshes



**UPHOLSTERED CUSHION SEAT**  
Fabric or leather



**INTEGRATED LEGREST**



**STEALTH EDITION**



**OTTOMAN LEGREST**  
Seperate legrest



**COAT HANGER**  
Retro-fittable

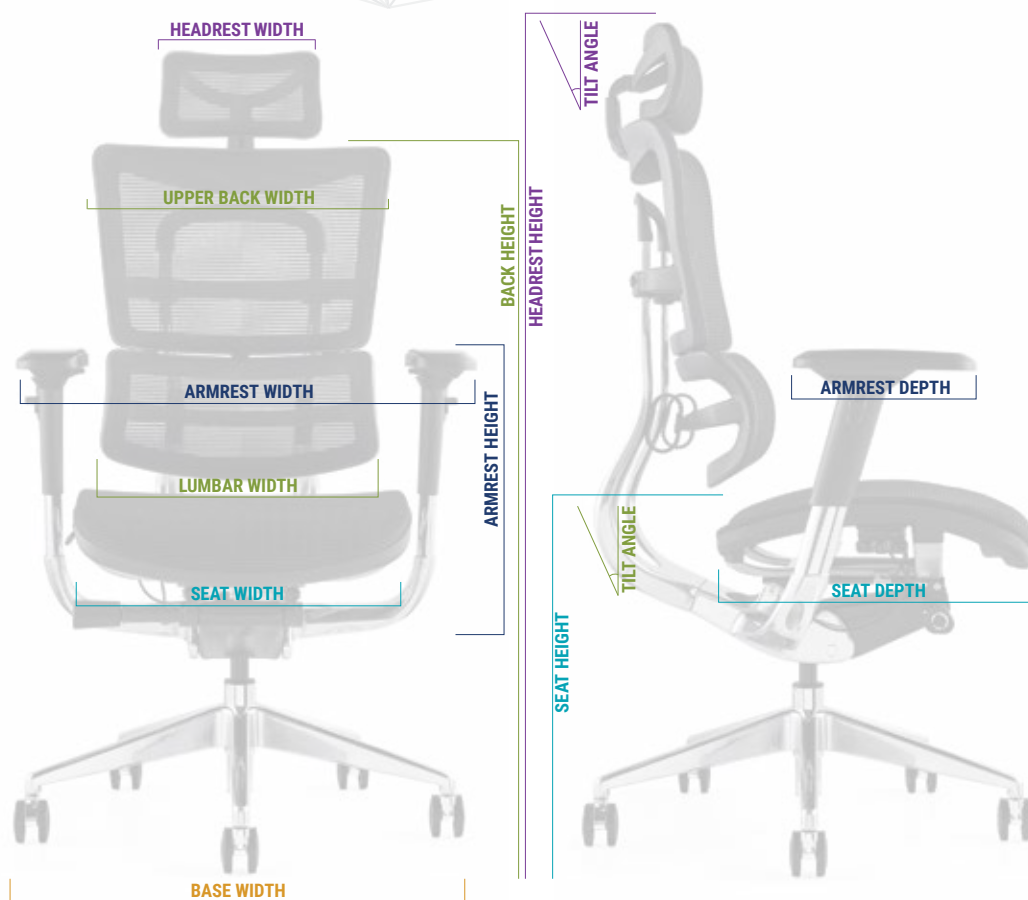
## i29 FEATURES

### **ERGO-ENGINEERED**

**THE i29 HAS BEEN DESIGNED TO CONTINUOUSLY SUPPORT THE HUMAN BODY AND ENCOURAGE DYNAMIC MOVEMENT WITHOUT COMPROMISING STYLE. THE i29 PROVIDES SUPERB ERGONOMIC SUPPORT AND DELIVERS COMFORT TO THE A RANGE OF ANTHROPOMETRIC BODY TYPES IN A WIDE RANGE OF POSITIONS, MAKING IT THE IDEAL SITTING SOLUTION FOR A VARIETY OF TASKS AND ENVIRONMENTS.**



# i29 DIMENSIONS



DESIGNED TO ADJUST TO MOST ANTHROPOMETRIC MEASUREMENTS

## ERGONOMIC HEADREST DIMENSIONS

WIDTH	270 mm
HEIGHT ADJUSTMENT	90-130 mm
ANGLE	40 °

## EXECUTIVE HEADREST DIMENSIONS

WIDTH	400 mm
HEIGHT	185-220 mm

## BACK DIMENSIONS

UPPER BACK WIDTH	500 mm
LUMBAR WIDTH	440 mm
HEIGHT (5 SETTINGS)	570-620 mm
ANGLE	45 °

## SEAT DIMENSIONS

STANDARD HEIGHT ADJUSTMENT	440-530 mm
OPTIONAL TALL STEM HEIGHT ADJUSTMENT	480-570 mm
WIDTH	490 mm
DEPTH	510-550 mm

## 3D ARMREST DIMENSIONS

DEPTH	270-320 mm
HEIGHT ADJUSTABLE (6 SETTINGS)	150-230 mm
HEIGHT (LOWEST TO HIGHEST)	650-720 mm
ANGLE	40 °

## 4D ARMREST DIMENSIONS

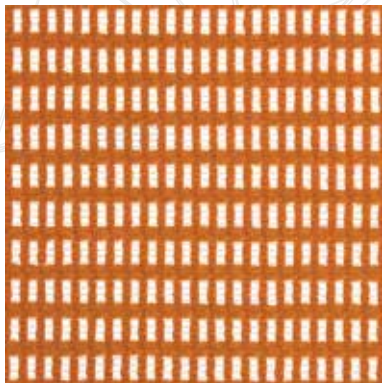
WIDTH	460-520 mm
DEPTH	270-320 mm
HEIGHT ADJUSTABLE (6 SETTINGS)	150-230 mm
ANGLE	40 °

## BASE DIMENSIONS

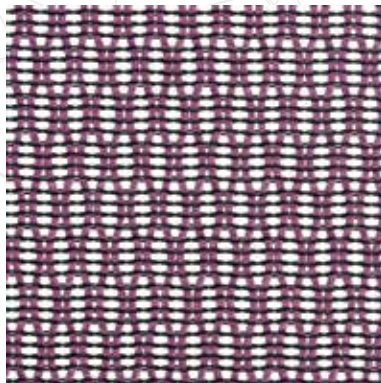
DIAMETER ø	700 mm
------------	--------

# C19 TEXTILES

We have selected a range of durable and contemporary textiles from a selection of patterned meshes to luxurious leather and soft fabric.



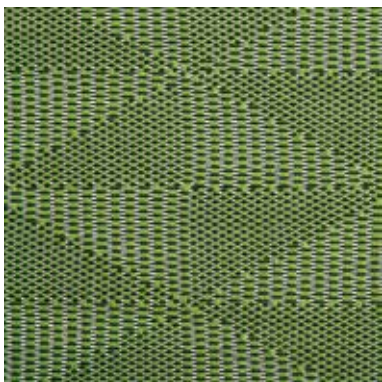
SOFT WEAVE MESH



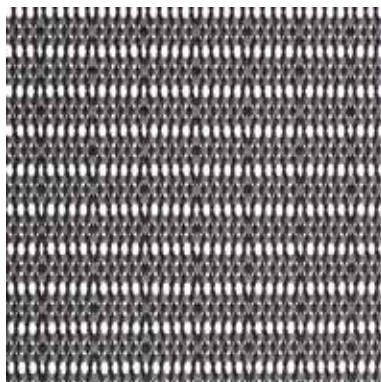
DIAMOND MESH



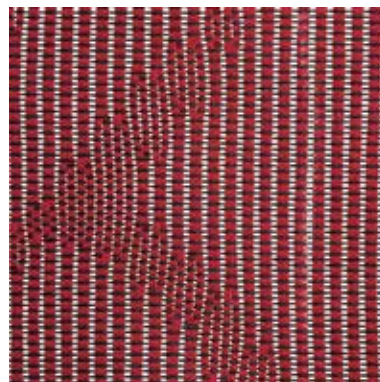
LEAF MESH



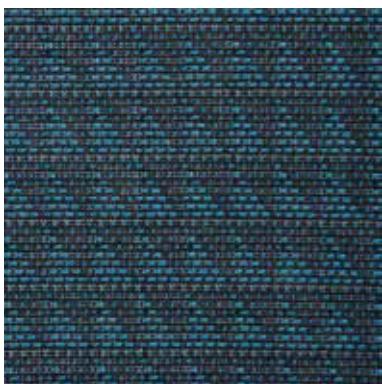
KITE MESH



STRIPE MESH



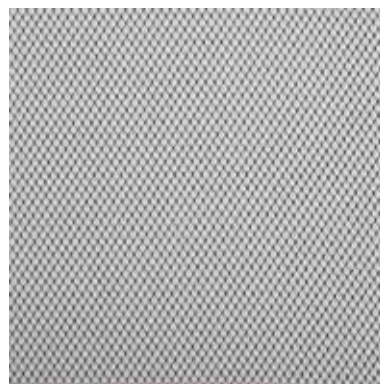
JUNGLE MESH



TRIANGLE MESH



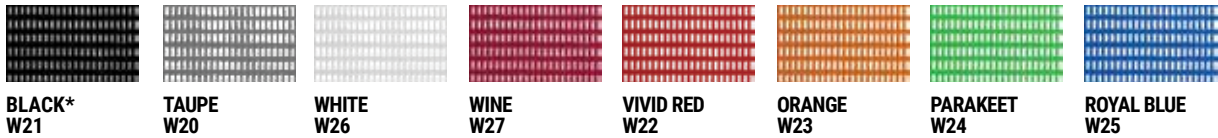
LEATHER



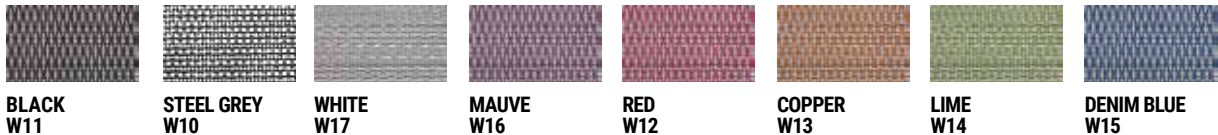
FABRIC

F94 comes in a range of textile colours and a choice of frame and base finishes to allow you to personalise your chair.

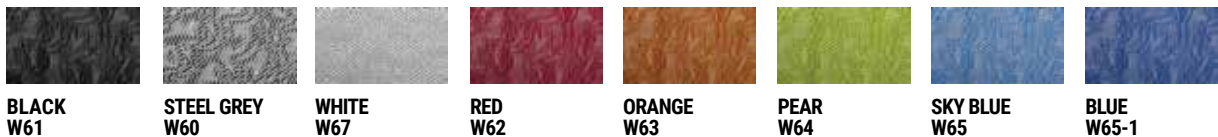
## SOFT WEAVE MESH



## DIAMOND MESH



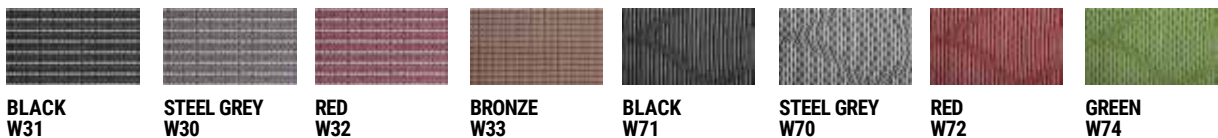
## LEAF MESH



## KITE MESH



## STRIPE MESH



## JUNGLE MESH

## TRIANGLE MESH



## LEATHER

## FABRIC



Colours may not be exact due to print processes. Please speak to your Hood Seating representative for upholstery samples.





**business  
interiors  
direct**

*creating imaginative solutions...  
...providing inspirational working environments*

# ***SAY HELLO WE ARE HERE TO HELP***

---



0114 229 3080



[sales@bi-direct.co.uk](mailto:sales@bi-direct.co.uk)



[www.bi-direct.co.uk](http://www.bi-direct.co.uk)



Unit 4 Dore House Business Park, 19 Orgreave Place  
Sheffield, South Yorkshire, S13 9LU

**HOOD**  
HOOD SEATING